



## MATERIALS

**Bernat® Softee® Baby Stripes™** (4.2 oz/120 g; 287 yds/262 m)  
**Main Color (MC)** Blue Yonder Stripe (53013) **5 balls**

**Bernat® Softee® Baby™** (5 oz/140 g; 362 yds/331 m)  
**Contrast A** Buttercup (54002) **2 balls**

Size U.S. G/6 (4 mm) crochet hook **or size needed to obtain gauge.**



CROCHET | SKILL LEVEL: **INTERMEDIATE**

## ABBREVIATIONS

**Approx** = Approximately  
**Beg** = Beginning  
**Ch** = Chain(s)  
**Cont** = Continue(ity)  
**Dc** = Double crochet  
**Rep** = Repeat(ing)  
**Rnd(s)** = Round(s)

**RS** = Right side  
**Sc** = Single crochet  
**Sl st** = Slip stitch  
**St(s)** = Stitch(es)  
**Tog** = Together  
**WS** = Wrong side

## MEASUREMENTS

Approx 39" x 42" [99 x 107 cm].

## GAUGE

16 dc and 8 rows.

## INSTRUCTIONS

**Note:** Ch 3 at beg of row or rnd counts as dc.

**Motifs** (make 9). (See Chart on page 2).

With MC, ch 52. Work chart, noting each square of chart represents 2 dc, and reading RS rows from right to left and WS rows from left to right. Carry color when not in use across top of previous row and work sts around it. Change colors by drawing new color through last 2 loops on hook and

proceed with new color.

**1st row:** (RS). 1 dc in 4th ch from hook. 1 dc in each ch to end of ch. Turn. 50 dc.

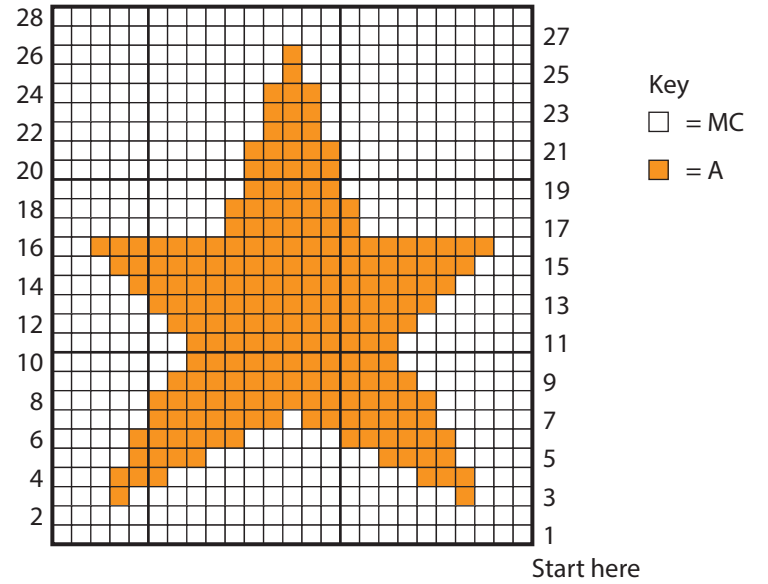
**2nd row:** Ch 3. 1 dc in each dc to end of row. Turn.

Rep 2nd row and cont working Chart until 28th row of chart is complete. Fasten off.

**Assembly:** With MC, work 1 row of sc through front loops only to join Motifs tog. Join into 3 Strips, having 3 Motifs in each strip. Work 1 row of sc through front loops only to join Strips tog.

**Border:** With RS facing, join MC with sl st to any corner.

**1st rnd:** Ch 3. Work dc evenly around outer edge, working 5 dc in each corner. Join with sl st to top of Ch 3. Fasten off.



Note: Each square in chart represents 2 dc.